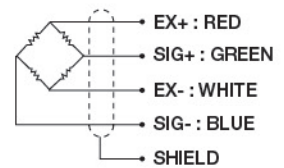
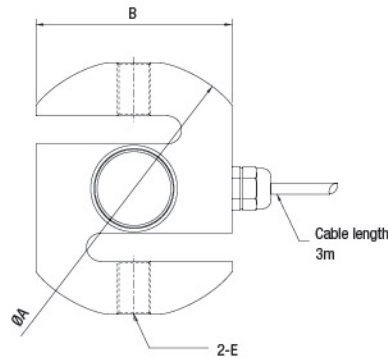
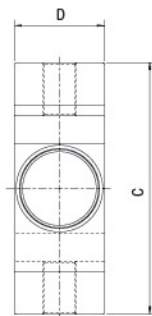
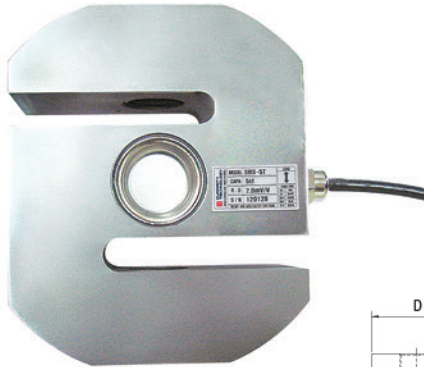


CSBS

Stainless S-beam load cell **500 kgf, 1, 2, 3, 5 tf**

www.curiotec.com



FEATURES

- Fully environmental protection IP67
- Tension or compression applications
- Suitable for hanging scales

Material

Stainless Steel

Cable

Braided shield 4-wire round cable with PVC-jacket

DIMENSIONS

Model	Capacity	A	B	C	D	E
CSBS-500L	500kgf	92	70	90	32	M12x1.75
CSBS-1T	1tf	92	70	90	32	M18x1.5
CSBS-2T	2tf					
CSBS-3T	3tf	130	100	120	45	M24x2.0
CSBS-5T	5tf					

SPECIFICATIONS

Max. Capacity		kgf,tf	500, 1tf, 2tf, 3tf, 5tf
Rated output		mV/V	2.0 ± 0.005
Zero balance		mV/V	0.0 ± 0.03
Combined error		%RO	0.03
Repeatability		%RO	0.01
Creep(30min.)		%RO	0.03
Temperature effec on	Zero value	%RO/10°C	0.028
	Output value	%RO/10°C	0.014
Excitation	Recommended	V	10
	Maximum	V	15
Resistance	Input	Ω	430 ± 50
	Output	Ω	350 ± 3.5
	Insulation	MΩ	>2,000@50V DC
Compensated temp. range		°C	-10 ~ +40
Operating temp. range		°C	-20 ~ +80